

Beverly, West Virginia – Small Town, Big History

Hannah Fincham, WVU Extension Agent – Randolph County
Madalaine Fleming, AFNHA AmeriCorps Member

First known as Edmundton, Beverly is a small rural town in Randolph County, West Virginia.

Beverly is a small, rural town in Randolph County, West Virginia situated in the Allegheny Highlands Region of Eastern West Virginia.

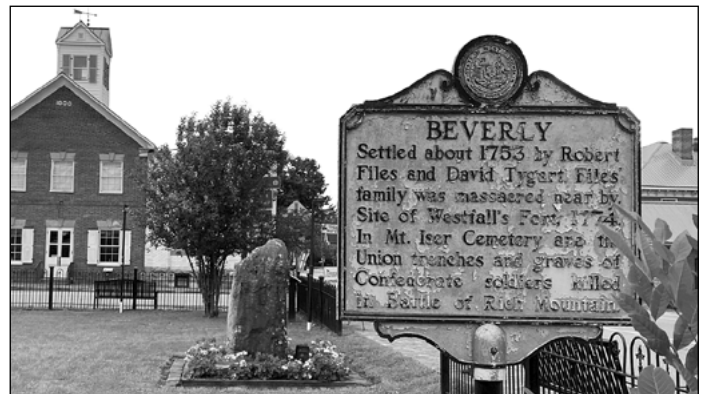
Town History

First known as Edmundton, the town was chartered as Beverly in 1790 and established as the county seat of Randolph County, Virginia. The county seat remained in Beverly until 1899 when it moved to the larger commerce town of Elkins.

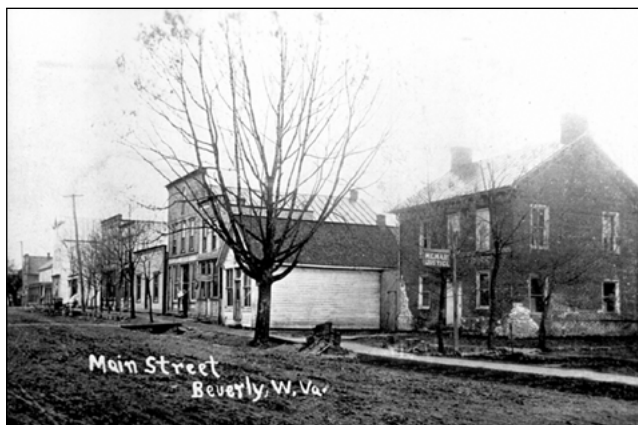
The 1840s brought the construction of the Staunton-Parkersburg Turnpike, a historic road from Virginia's upper Shenandoah Valley to the Ohio River. The 20 years prior to the Civil War were good ones for Beverly, and the town had become an important trade center in the Tygart Valley.

Contributing to the growth of Beverly and many other towns, the Staunton-Parkersburg Turnpike was worth fighting for. In one of the first campaigns of the Civil War, troops fought for control of this turnpike at the Battle of Rich Mountain, five miles west of Beverly. The battle gave Union troops control of the turnpike, the Tygart Valley, the Western part of Virginia and the railroad.

Following the Union victory at Rich Mountain, many Southern supporters left their homes and headed south. Union troops occupied Beverly, boarding soldiers in homes, building huts and forts and setting up hospitals. Beverly was raided four times by Confederate troops during the Civil War but remained in Union control.



– continued –



After the war, Beverly, now in West Virginia, slowly recovered as homes and stores were rebuilt and new businesses came to town. The Beverly Bank, a notable building in the town, opened on Jan. 1, 1900. Several other buildings including stores, the Masonic Lodge, and the Independent Order of Odd Fellows Hall were constructed over the next ten to 15 years. These structures completed the look that Beverly still has today.

Historical Landmarks

There are nearly four dozen historical landmarks of note within Beverly, and most of these locations are recognized by the National Register of Historic Places. Most are residential, with a commercial section centralized around the public square. Architecturally, the dominant design features are of Federal and Victorian styles with elements of Neoclassical, Greek and Gothic revivals also present.

The Beverly Heritage Center, a must-see, is a local interpretive museum and visitor center made up of four prominent landmarks: the 1900 Beverly Bank, the 1808 Randolph County Courthouse, the 1912 Aries Hill Building, and the 1856 Bushrod Crawford House. Another historic building is the Blackman-Bosworth Store, built in 1828. The building has served as a store, Union soldier commissary, post office, and print shop

and currently operates as the Randolph County Museum.

Numerous noteworthy residences make up the bulk of historical sites. The Chenoweth House, built in 1856, belonged to the remarkable architect and bridgebuilder Lemuel Chenoweth. The Humboldt Yokum House is a visually unique Queen Anne-style home, built in 1890. One of the oldest houses is the Montgomery Hart/Collett House, built circa 1772.

Other sites include the Beverly Cemetery, the Mt. Iser Confederate Cemetery, two churches, one with a distinct stained-glass window, and two jails.

Visiting Beverly

One of the best ways to experience all Beverly has to offer is by taking a self-guided walking tour of the town. The Beverly Heritage Center offers options for guided tours, the most popular being the Lantern Tour. Set in October, guides lead guests through the town by lantern light, sharing Beverly's more macabre history.

Aside from sightseeing, Beverly is also host to many events worth attending. Beverly Heritage Days is a weekend-long event, annually in July, celebrating the town's rich history. The event features interactive experiences such as reenactment camps with living history demonstrations and activities. Old-Fashioned Christmas takes place the first weekend of December. Local families flock to this event, with giveaways, music and a visit from a 19th century inspired Father Christmas.

A visit to Beverly is unique in every season. Year-round, visitors can experience an escape room in the 1841 jail and tour the Beverly Heritage Center. Outdoor enthusiasts love Beverly's proximity to the Monongahela National Forest and several state parks and forests. There is plenty to see and do in this region on a day trip, long weekend, or an extended stay. Along main street and beyond, the quaint town of Beverly is an exceptional place to explore.

2023

In accordance with Federal law and U.S. Department of Agriculture (USDA) civil rights regulations and policies, WVU is prohibited from discriminating on the basis of race, color, national origin, sex, age, disability, and reprisal or retaliation for prior civil rights activity.

Reasonable accommodations will be made to provide this content in alternate formats upon request. Contact the WVU Extension Office of Communications at 304-293-4222. For all other ADA requests, contact Division of Diversity, Equity and Inclusion at diversity@mail.wvu.edu.

